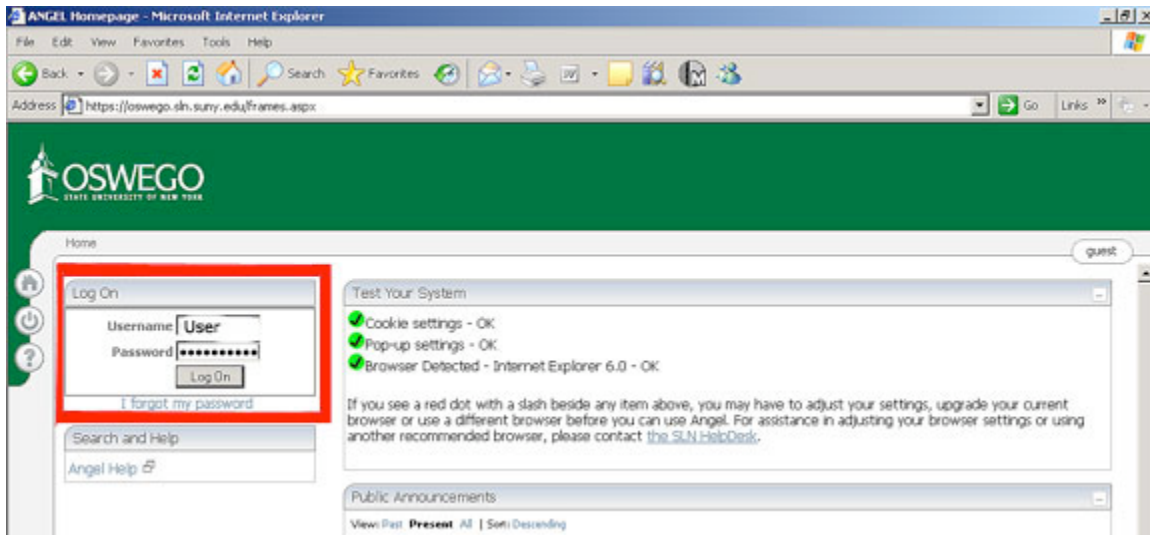


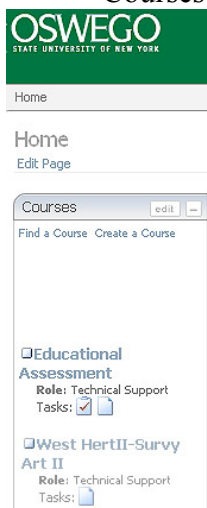
# Getting Started in ANGEL

ANGEL LMS can be used to web-enhanced courses. Angel is compatible with both PCs and Macs. On PCs it works well with either Microsoft's Internet Explorer 7.0 & 8.0 or Mozilla Firefox 3.0. When using a Mac, we have learned that Angel runs best when using Firefox Mozilla browser. Firefox can be downloaded for free at <http://www.mozilla.org/>.

1. In your web browser's address box, type – **https://oswego.sln.suny.edu**
2. On the login page, type in your SUNY Oswego email username and password.



3. Once you login, you will be on your Home page which has the course you are enrolled in listed on it. To enter your course, click on your course listed under the Courses Heading.



4. Located on the far left-hand side of the screen are a group of buttons.



5. If you need technical assistance with ANGEL, contact the SLN Help Desk at 1.800.875.6269. For questions related to your ANGEL account (log-in problems, course not there, etc), contact the SUNY Oswego CTS Help Desk at 315.312.3456.